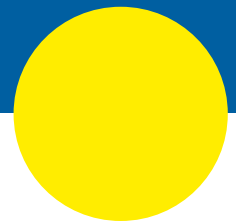




dt

Cleaning

dt DIJKSTRA



excellent grading & cleaning



Surprising interaction between dry and wet cleaning

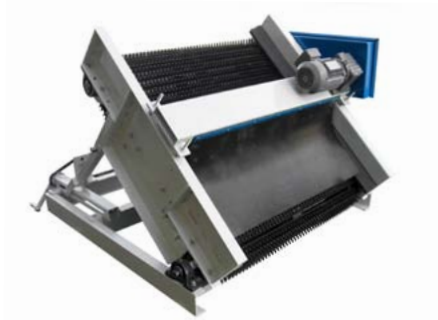
To remove soil and other undesired material during product flow, DT Dijkstra offers effective dry or wet cleaning solutions or a combination of both. In addition to product-friendly features of the highest standard, the machines are distinctive through their ease of use and sustainability.

- ▶ For growers, packers and industries
- ▶ Solid and proven technology
- ▶ Effective cleaning
- ▶ Product friendly
- ▶ Sophisticated water management



excellent grading & cleaning

For over 85 years, DT Dijkstra has specialised in developing and producing machines for grading, cleaning and handling of bulbous and tuberous plants such as potatoes, onions, beetroot, bulbs, sprouts, carrots, etc. In addition to stand-alone machines, we develop complete turn-key solutions according to customer specifications. Typical of DT Dijkstra employees is the passion with which they vigorously carry out their joint responsibilities as service-oriented and innovative cooperation partners.



Various techniques are available for dry cleaning tuberos and bulbous products (potatoes, beetroot, etc.). The choice of system is determined by the customer's desired result. In each case, minimising damage to the product during cleaning has priority.

Machines for wet cleaning of tuberos and bulbous products (potatoes, onions, beetroot, etc.) remove - in a continuous process - soil and other undesired material from the main product. The cleaning units can be used as stand-alone units or they can be integrated with a number of machines within one conveyor line.



Separating

The drumwasher can be fitted with a system for separating clods, stones and floating debris from the main product. It can be used as a stand-alone unit or in combination with other machines.

Polishing

Effective cleaning of the main product is necessary for product processing. An extra dimension is added when the product is polished during the finishing process. The brushes in the polisher give excellent polishing results and will add value to your end-product.

Drying

For longer product shelf life it may be desirable to dry the product prior to packing. Depending on the product and desired capacity, DT Dijkstra can provide felt driers.



Water management

To manage water efficiently, DT Dijkstra has developed a water management system. This system combines maximum cleaning effect with the desired capacity and minimises water usage. The supply and disposal of water is user-friendly and easy to regulate.

Flexibility

The washing units can be expanded to include a draining system that removes debris from the washing line while keeping downtime to a minimum. This option is often used by companies that process multiple varieties of products.

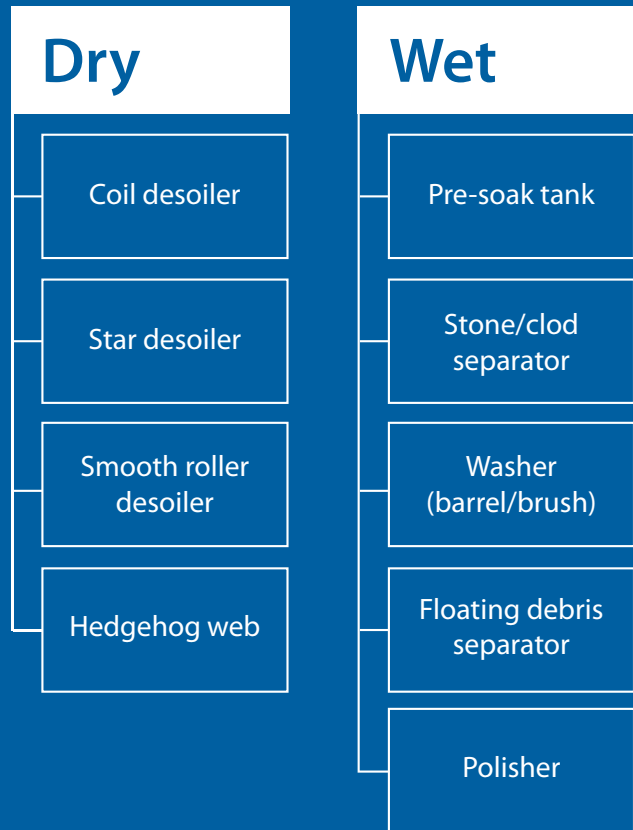
Solid and proven technology

Sustainable, product-friendly technology that makes efficient use of water characterises DT Dijkstra low-maintenance cleaning systems.



Dry and wet cleaning

The sturdy construction of DT Dijkstra cleaning systems guarantees a very long lifespan. That is how we achieve the lowest price per ton of processed product.



Landbouwkade 6 | 8304 AE Emmeloord | The Netherlands

T +31 (0)527 - 697 731 | F +31 (0)527 - 617 232 | info@dttijkstra.nl | www.dtijkstra.nl

- | Grading
- | Cleaning
- | Installations
- | Logistics
- | Service